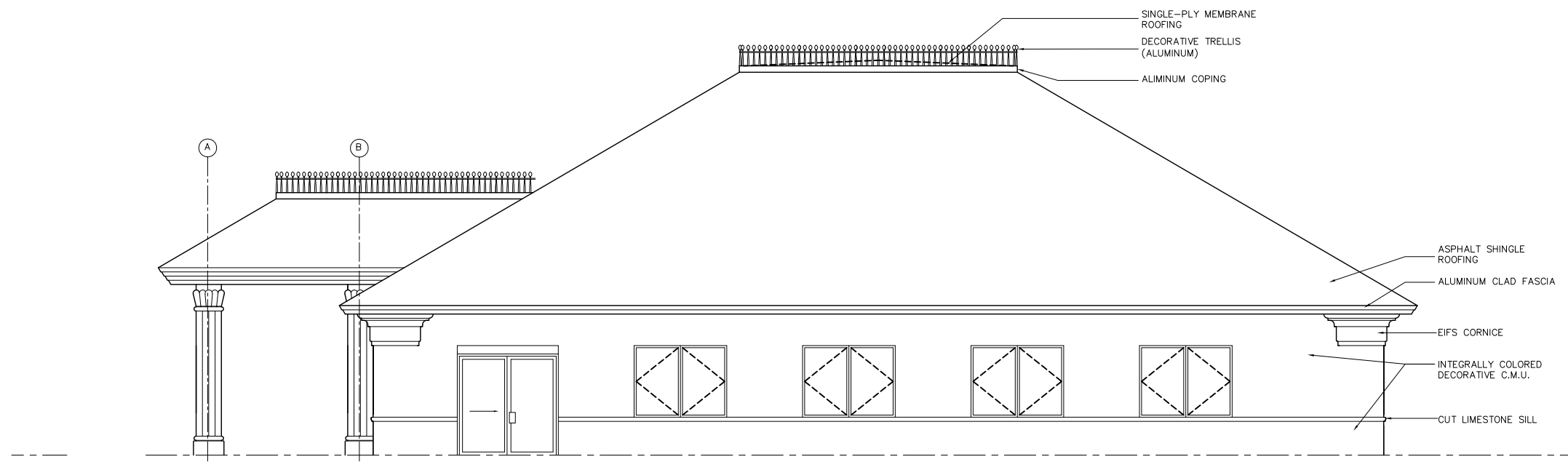


NORTH ELEVATION
3/16" = 1'-0"



SOUTH ELEVATION
3/16" = 1'-0"

PROJECT ARCHITECT:
DRN
DRN & ASSOCIATES, ARCHITECTS, PC

PROJECT DESIGNER:
JIA
NIJHON ASSOCIATES, ARCHITECTS

Revisions:

SIKH GURDWARA TEMPLE

ELEVATIONS

Scale
3/16" = 1'-0"

Date
3/10/09

Sht. No.
A-3